

City of Keizer Service Areas

Services Areas

- PGE
 - Salem Electric
 - Loren's Sanitation
 - Valley Recycling & Disposal
-
- Grid
 - Keizer Fire and Rescue, G4
 - Keizer Police Office, G4
 - Parcels
 - Claggett Creek
 - Labash Ditch
 - Other Waterways
 - Railroad
 - Park
 - Staats Lake
 - Willamette River
 - Other Waterbodies
 - Keizer City Limits
 - Salem City Limits
 - Marion County
 - Polk County

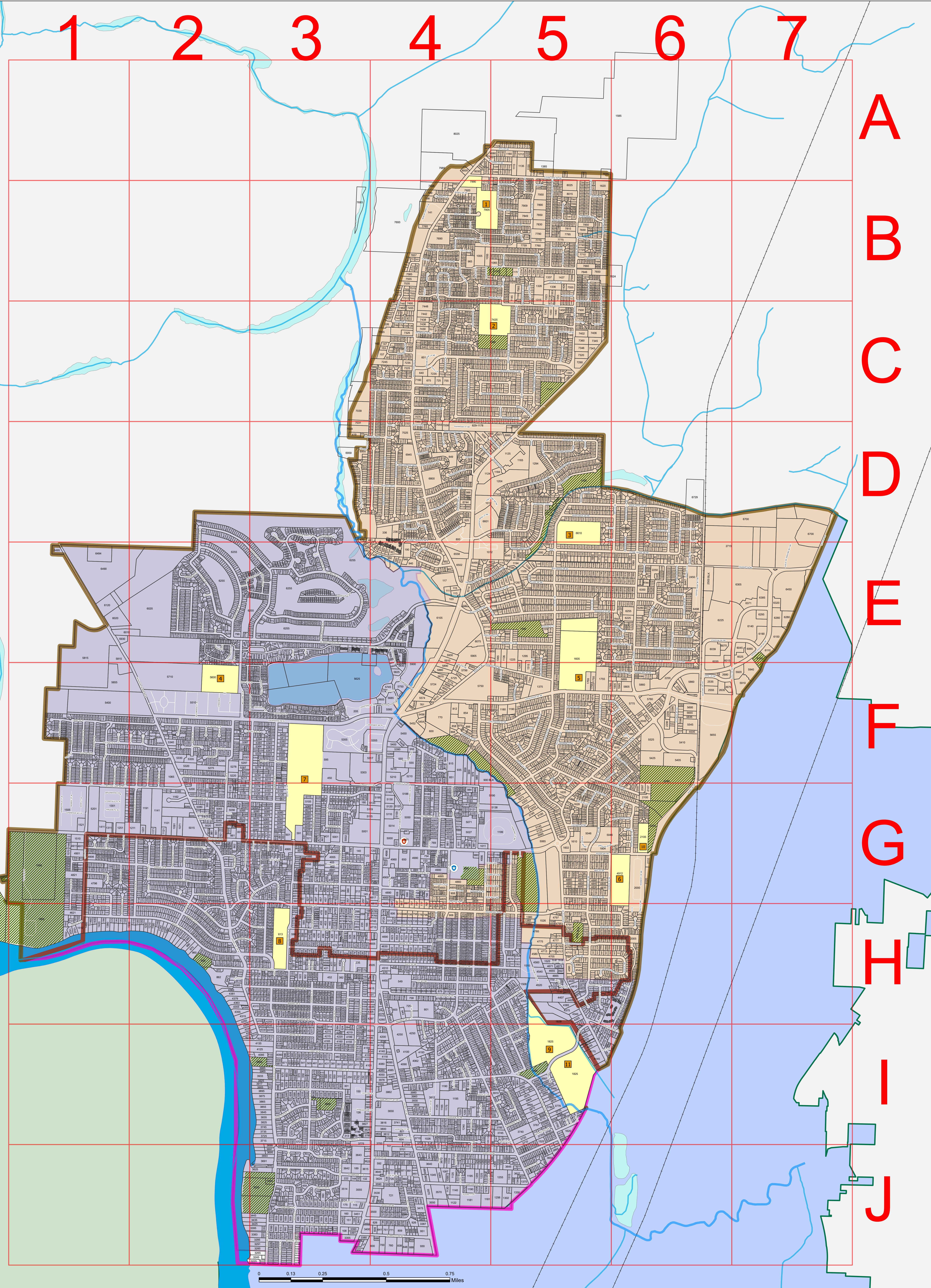
- ### School
- 1 Forest Ridge Elementary School
 - 2 Clear Lake Elementary School
 - 3 Gubser Elementary School
 - 4 Keizer Elementary School
 - 5 Whitaker Middle School
 - 6 Kennedy Elementary School
 - 7 McNary High School
 - 8 Cummings Elementary School
 - 9 Weddie Elementary School
 - 10 Crosshill Christian School
 - 11 Claggett Creek Middle School
 - School Parcel



Version Date: October 2020

The City of Keizer is not liable for incomplete or amended data. Data and analysis presented within project are based on best available information, and are expected to be updated on a regular basis. Layers reflect documented resources at the time of data aggregation; and as such, absence of documentation does not necessarily indicate that no data are present. Some data layers may be summarized to preserve the confidentiality of sensitive information. The City of Keizer maintains no responsibility from misuses of the data or the application. This product is provided as is, without warranty. In no event is the City of Keizer liable for damages from the use of this product. This product is subject to license and copyright limitations. Distribution, sale and/or resale is prohibited.

I have read this disclaimer and understand the intent of this system, and therefore fully release the City of Keizer from any liability arising from or related to using the project.



1511 CT NE, G4	1512 CT NE, G4	1513 CT NE, G4	1514 CT NE, G4	1515 CT NE, G4	1516 CT NE, G4	1517 CT NE, G4	1518 CT NE, G4	1519 CT NE, G4	1520 CT NE, G4	1521 CT NE, G4	1522 CT NE, G4	1523 CT NE, G4	1524 CT NE, G4	1525 CT NE, G4	1526 CT NE, G4	1527 CT NE, G4	1528 CT NE, G4	1529 CT NE, G4	1530 CT NE, G4	1531 CT NE, G4	1532 CT NE, G4	1533 CT NE, G4	1534 CT NE, G4	1535 CT NE, G4	1536 CT NE, G4	1537 CT NE, G4	1538 CT NE, G4	1539 CT NE, G4	1540 CT NE, G4	1541 CT NE, G4	1542 CT NE, G4	1543 CT NE, G4	1544 CT NE, G4	1545 CT NE, G4	1546 CT NE, G4	1547 CT NE, G4	1548 CT NE, G4	1549 CT NE, G4	1550 CT NE, G4	1551 CT NE, G4	1552 CT NE, G4	1553 CT NE, G4	1554 CT NE, G4	1555 CT NE, G4	1556 CT NE, G4	1557 CT NE, G4	1558 CT NE, G4	1559 CT NE, G4	1560 CT NE, G4	1561 CT NE, G4	1562 CT NE, G4	1563 CT NE, G4	1564 CT NE, G4	1565 CT NE, G4	1566 CT NE, G4	1567 CT NE, G4	1568 CT NE, G4	1569 CT NE, G4	1570 CT NE, G4	1571 CT NE, G4	1572 CT NE, G4	1573 CT NE, G4	1574 CT NE, G4	1575 CT NE, G4	1576 CT NE, G4	1577 CT NE, G4	1578 CT NE, G4	1579 CT NE, G4	1580 CT NE, G4	1581 CT NE, G4	1582 CT NE, G4	1583 CT NE, G4	1584 CT NE, G4	1585 CT NE, G4	1586 CT NE, G4	1587 CT NE, G4	1588 CT NE, G4	1589 CT NE, G4	1590 CT NE, G4	1591 CT NE, G4	1592 CT NE, G4	1593 CT NE, G4	1594 CT NE, G4	1595 CT NE, G4	1596 CT NE, G4	1597 CT NE, G4	1598 CT NE, G4	1599 CT NE, G4	1600 CT NE, G4
----------------	----------------	----------------	----------------	----------------	----------------	----------------	----------------	----------------	----------------	----------------	----------------	----------------	----------------	----------------	----------------	----------------	----------------	----------------	----------------	----------------	----------------	----------------	----------------	----------------	----------------	----------------	----------------	----------------	----------------	----------------	----------------	----------------	----------------	----------------	----------------	----------------	----------------	----------------	----------------	----------------	----------------	----------------	----------------	----------------	----------------	----------------	----------------	----------------	----------------	----------------	----------------	----------------	----------------	----------------	----------------	----------------	----------------	----------------	----------------	----------------	----------------	----------------	----------------	----------------	----------------	----------------	----------------	----------------	----------------	----------------	----------------	----------------	----------------	----------------	----------------	----------------	----------------	----------------	----------------	----------------	----------------	----------------	----------------	----------------	----------------	----------------	----------------	----------------	----------------